

NetWay4EWPN

4-port PoE+ Hardened Switch



Altronix NetWay4EWPN Outdoor PoE+ Hardened Switch provides a 1Gb SFP port and four (4) PoE+ (30W) ports. Cameras/edge devices may be located up to 100m from the unit. Embedded LINQ Technology allows you to monitor, control, and report power and diagnostics from anywhere.



NetWay4EWPN

Key Features

- Four (4) 10/100/1000 Mbps PoE/PoE+ (up to 30W) ports
- External 48-56V UL Listed ITE power supply required
- IEEE 802.3af (15W) and IEEE 802.3at (30W) compliant
- One (1) Gigabit SFP port
- NEMA4/4X, IP66 Rated enclosure for outdoor use
- PoE activity LED indicators
- UL Listed in the U.S. and Canada
- CE European Conformity
- Lifetime Warranty

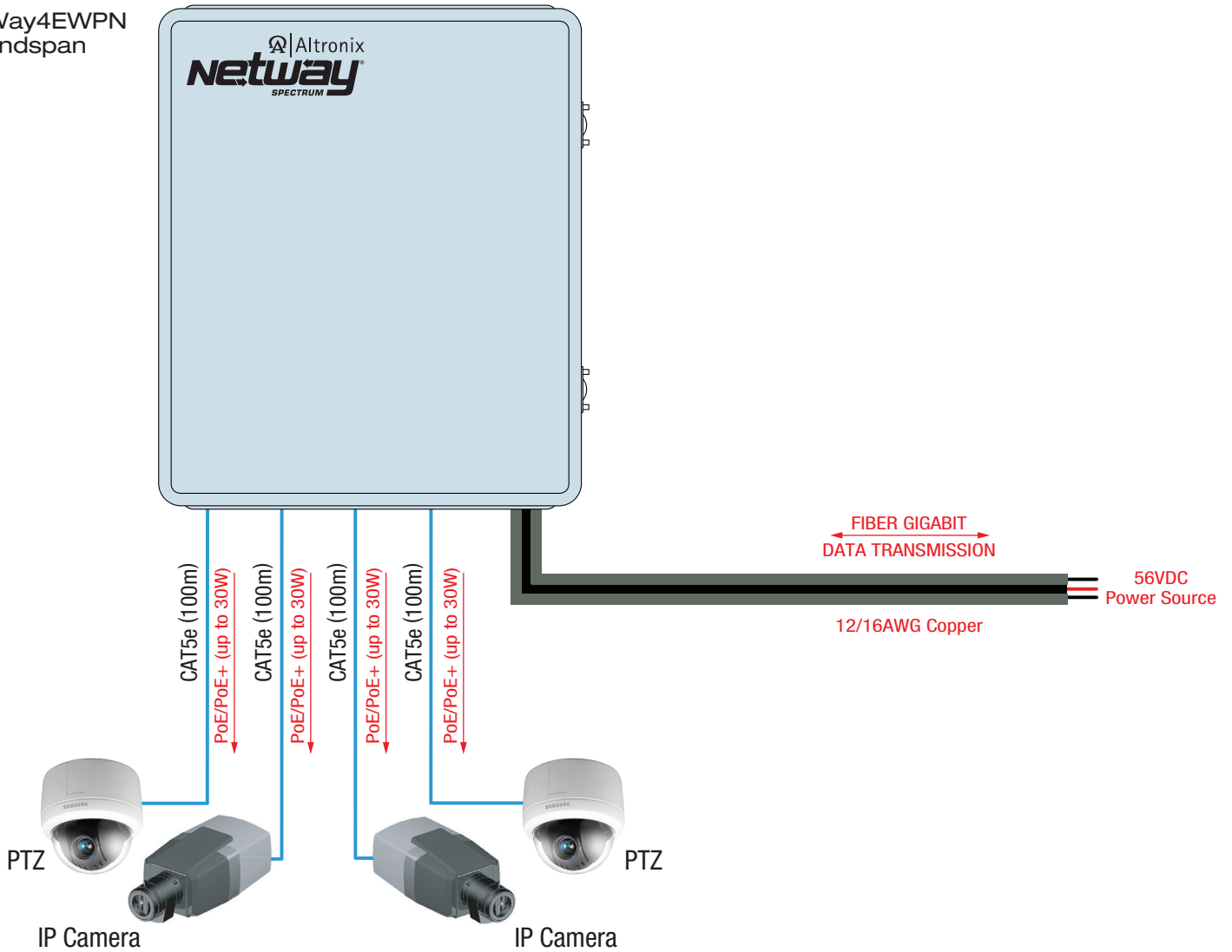
Similar products

NetWay4EWPX	Outdoor 4-port PoE+ Hardened Switch in NEMA 4/4X, IP66-11 enclosure which accommodates stand-by batteries
NetWay4EWP	Outdoor 4-port PoE+ Hardened Switch in NEMA 4/4X, IP66-11 enclosure
NetWay4EPL	4-port PoE+ Hardened Switch with Integral Power on a Backplane
NetWay4EX	Indoor 4-port PoE+ Hardened Switch in NEMA 1 Rated indoor enclosure
NetWay4EB	4-port PoE+ Hardened Switch (board only)

Lifetime Warranty

Typical Application

NetWay4EWPN
Endspan



Lifetime Warranty



NetWay4EWPN

4-port PoE+ Hardened Switch



Specifications

Input

Voltage 48V-56V (UL Listed ITE power supply)

Output

Maximum Power Four (4) 10/100/1000 Mbps PoE/PoE+ (up to 30W) ports IEEE 802.3af (15W) and IEEE 802.3at (30W) compliant 120W max. power *(external power supply required)* Integral surge protection

Fiber Port: One (1) Gigabit SFP port

Indicators (LED)

Individual PoE On LEDs for each port
Individual IP Link status, 10/100Base-T/active LEDs for each port
ALOS LED indicates fiber connection for SFP port
Heartbeat LED indicates proper operation of the unit

LINQ Technology:

Remote network management allows for camera/device reset and monitoring
Provides local and/or remote access to critical information via LAN/WAN
Email and Windows Dashboard Alert notifications report real-time diagnostics
Event log tracks history

Agency Listings

UL/cUL UL60950-1 (Information Technology Equipment) UL60950-22 (Information Technology Equipment to be installed Outdoors)
CE European Conformity

Physical and Environmental

Dimensions (H x W x D)

Enclosure: 13.31" x 11.31" x 5.59" (338.1mm x 287.3mm x 142mm)
Shipping: 20.25" x 12.5" x 7.25" (514.4mm x 317.5mm x 184.2mm)
NEMA 4/4X, IP66-11 Rated enclosure for outdoor use

Weight (approx.)

Product: 7.7 lb. (3.49 kg)
Shipping: 10.0 lb. (4.54 kg)

Temperature

Operating (120W): -40°C to 75°C (-40°F to 167°F)
Storage: -40°C to 85°C (-40°F to 185°F)

Relative Humidity 85% +/- 5%

Operating Altitude: -304.8 to 2,000m

Lifetime Warranty

NetWay4EWPN

4-port PoE+ Hardened Switch



Power Sourcing Equipment and Accessories (order separately)



- 4-port Ethernet over Fiber Media Converters for Applications Utilizing Composite or Conventional Cabling**
- NetWaySP4** Unit passes a maximum power up to 120W per port (240W total power) from a Power Supply or Midspan Injector. Four (4) 1Gb SFP ports.
 - NetWaySP4P** Unit provides a maximum power up to 120W per port (240W total power) from a built-in Power Supply/ Charger. Four (4) 1Gb SFP ports.
 - NetWaySP4P2** Unit provides 56VDC power-limited 60W max. per port (240W total power) from a built-in Power Supply/Charger. Four (4) 1Gb SFP ports.



SFP Modules - Hot Pluggable Transceivers

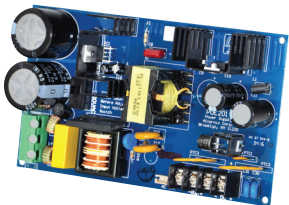
- P1MM** Multi-Mode SFP Module for distances up to 550m
- P1SM10** Single-Mode SFP Module for distances up to 10km
- P1AB2K** Single Strand SFP Module for distances up to 2km
- P1GCE** Copper SFP Module for distances up to 100m



NetWaySP1A

Ethernet over Fiber Media Converter/Repeater for Applications Requiring an Additional SFP (Fiber) Port

NetWaySP1A PoE powered media converter/repeater converts 10/100/1000 Mbps to Fiber (1000Base-X/SX/LX).



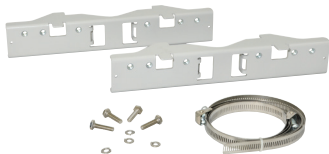
PoE Power Supplies

POE60 - 75W Power Supply/Lithium Iron Phosphate Charger

Provides 75W for NetWay Spectrum switches. It also features a built-in charger for Lithium Iron Phosphate batteries.

POE201 - 120W Power Supply/Charger

Provides 120W for NetWay Spectrum switches. It also features a built-in charger for sealed lead acid or gel type batteries.



PMK1 - Pole Mount Kit

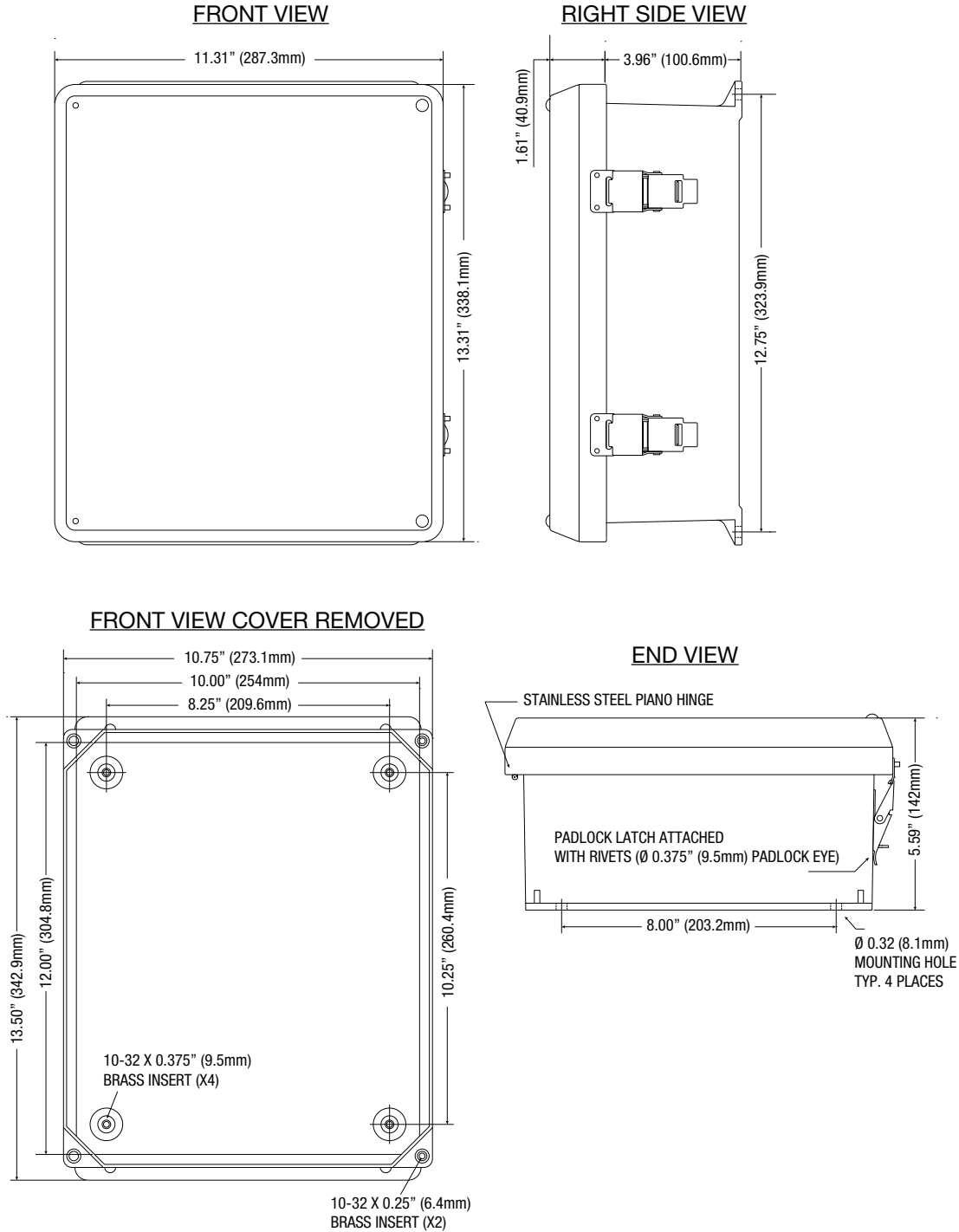
PMK1 pole mount kit is designed to simplify installation of outdoor units. It accommodates 2" - 8" (diameter) poles.

Lifetime Warranty

Dimensions and Drawing

Dimensions (H x W x D approximate)

13.31" x 11.31" x 5.59" (338.1mm x 287.3mm x 142mm)



Lifetime Warranty

Altronix Corporation | 140 58th St | Brooklyn, NY 11220 USA

phone: +1 718.567.8181 | fax: +1 718.567.9056 | email: info@altronix.com | www.altronix.com